



Human Soluble Liver Antigen / Liver Pancreas Antigen (SLA/LP)

Origin:	Recombinant	Cat. No.:	41A152
Tag:	N-terminal 6xHis	Size:	0.1 mg
Source:	<i>Spodopterafrugiperda</i> Sf9	Purity:	>90%
Other names:	SLA/LP, SEPSECS	Species:	Human

Description

Expressed in insect Sf9 cells with total 525 AA. Mw: 58.7 KDa(calculated). N-terminal 6xHis-tag and TEV cleavage site, extra 25 AA (highlighted).

Recombinant antigen for research use or manufacturing only.

Introduction to the Molecule

SLA/LP catalyzes the last step of sec synthesis by way of converting O-phosphoseryl-tRNA(sec) to selenocysteinyl-tRNA(sec) using selenophosphate as the selenium donor. Furthermore, it is considered as a specific marker of autoimmune hepatitis.

Immunological Function

As an autoantigen, SLA/LP binds with IgG-type human auto-antibodies.

Amino Acid Sequence

MSYYHHHHHDYDIPTTENLYFQGANRESFAAGERLVSPAYVRQGCEARRSHEHLIRLLE
KGKCPENGWDESTLELFLHELAIMDSNNFLGNCVGEREGRVASALVARRHYRFIHGIGRSGD
ISAVQPKAAGSSLLNKITNSLVLDIIKLAGVHTVANCFVVPATGMSLTLCFLTLRHKRPKAKYII
WPRIDQKSCFKSMITAGFEPVVIENVLEGDELRTDLKAVEAKVQELGPDCILCIHSTTSCFAPRV
PDRLEELAVICANYDIPHIVNNAYGVQSSKCMHLIQQGARVGRIDAFVQSLDKNFMVPVGGAI
AGFNDSFIQEISKMYPGRASASPSLDVLTLLSLGNGYKLLKERKEMFSYLSNQIKKLSEAYN
ERLLHTPHNPISLAMTLKTLDEHRDKAVTQLGSMFTRQVSGARVVPLGSMQTVSGYTFRGFMS
HTNNYPCAYLNAASAIGMKMQDVDLFIKRLDRCLKAVRKERSKESDDNYDKTEDVDIEEMALK
LDNVLLDITYQDASS

Applications

Standard ELISA test, line/dot assay and microarray assay with positive/negative sera panels.

Formulation

Liquid in storage buffer (50mM Tris, 300-500mM NaCl, 10% Glycerol, Protease inhibitor, pH8.0).





Storage

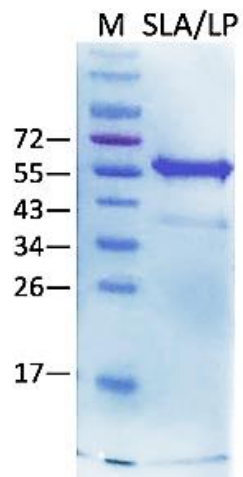
Store at -80°C . Avoid repeated freezing/thawing cycles.

Quality Control Test

BCA to determine quantity of the protein.

SDS PAGE to determine purity of the protein.

SDS-PAGE gel



Contact Us

- Website: www.immunodiagnostics.com.hk
- E-mail: info@immunodiagnostics.com.hk
- Tel: (+852) 2831 5526; 2831 5508
- Fax: (+852) 2816 2095

