



## Human small nuclear ribonucleoprotein Sm D3 (SmD3)

<b>Origin:</b>	Recombinant	<b>Cat. No.:</b>	41550
<b>Tag:</b>	N-terminal 6xHis	<b>Size:</b>	0.1 mg
<b>Source:</b>	<i>Spodoptera frugiperda</i> Sf9	<b>Purity:</b>	>90%
<b>Other Names:</b>	SmD3, snRNP3	<b>Species:</b>	Human

### Description

Expressed in insect Sf9 cells with total 150 AA. Mw: 16.9 KDa (calculated). N-terminal 6xHis-tag and TEV cleavage site, 25 extra AA (highlighted).

**Recombinant antigen for research use or manufacturing only.**

### Introduction to the Molecule

Small nuclear ribonucleoprotein complexes (abbreviated as U-snRNP) are essential for splicing of precursor mRNA molecules. Seven different Sm proteins aggregate into a heteroheptameric protein core, including small nuclear ribonucleoprotein Sm D3 (SmD3 or snRNP3).

In the blood of patients with systemic lupus erythematosus, antinuclear antibodies are developed with Sm specificity.

### Immunological Function

As an autoantigen, SmD3 binds with IgG-type human auto-antibodies.

### Amino Acid Sequence

**MSYYHHHHHDYDIPTTENLYFQGA**SIGVPIKVLHEAEGHIVTCETNTGEVYRGKLTAEED  
NMNCQMSNITVTYRDGRVAQLEQVYIRGSKIRFLILPDMLKNAPMLKSMKNKNQGGAGRGK  
AAILKAQVAARGRGRGMGRGNIFQKRR

### Applications

Standard ELISA test, line/dot assay and microarray assay with positive/negative sera panels.

### Formulation

Liquid in storage buffer(50mM Tris, 150mM NaCl, 400mM L-Arginine, 2mM Reduced GSH, 0.2mM Oxidized GSSG, Protease inhibitor, pH 7.4).

### Storage

Store at -20°C. Avoid repeated freezing/thawing cycles.





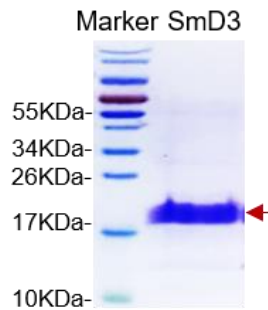
### Quality Control Test

BCA to determine quantity of the protein.

SDS PAGE to determine purity of the protein.

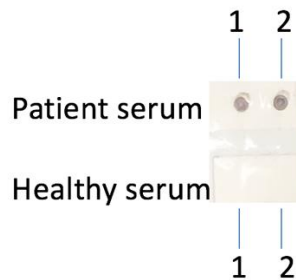
Immunodot analysis to determine functionality of protein.

### SDS-PAGE Gel



### Dot blot assay

**Dot blot analysis of SmD3**



Analysis of serum from healthy subjects and patients. Recombinant autoantigens were utilized in this dot-blot assay for validation

### Contact Us

- Website: [www.immunodiagnostics.com.hk](http://www.immunodiagnostics.com.hk)
- E-mail: [info@immunodiagnostics.com.hk](mailto:info@immunodiagnostics.com.hk)
- Tel: (+852) 2831 5526; 2831 5508
- Fax: (+852) 2816 2095

