



Human Pyruvate Dehydrogenase Complex E2 (PDC-E2)

Origin:	Recombinant	Cat. No.:	41A082
Tag:	N-terminal 6xHis	Size:	0.1 mg
Source:	<i>Spodopterafrugiperda</i> Sf9	Purity:	>90%
Other names:	PDC-E2	Species:	Human

Description

Expressed in insect Sf9 cells with total 586 AA. Mw: 62.72 KDa(calculated). N-terminal 6xHis-tag and TEV cleavage site, extra 25 AA (highlighted).

Recombinant antigen for research use or manufacturing only.

Introduction to the Molecule

The pyruvate dehydrogenase complex (PDC) is a mitochondrial multienzyme complex involved in the maintenance of the cellular redox state. PDC-E2 is the central E2 component of this complex.

The anti-PDC-E2 antibodies belong to the group of Anti-Mitochondrial Antibodies (AMA-M2) and are strongly associated with PBC.

Immunological Function

As an autoantigen, PDC-E2 binds with IgG-type human auto-antibodies.

Amino Acid Sequence

**MSYYHHHHHDYDIPTTENLYFQGASLPPHQKVPLPSLSPTMQAGTIARWEKKEGDKINE
GDLIAEVETDKATVGFESLEECYMAKILVAEGTRDVPIGAIICITVGKPEDIEAFKNYTLDSSAAP
TPQAAPAPTPAATASPPTPSAQAPGSSYPPHMVLLPALSPTMTMGTVQRWEKKVGEKLSEGD
LLAEIETDKATIGFEVQEEGYLAKILVPEGTRDVLGTPLCIIVEKEADISAFADYRPTEVTDLKPQ
VPPPTPPPVAAPPTPQPLAPTPSAPCPATPAGPKGRVFSPLAKKLAVEKGIDLTQVKGTGPDG
RITKKDIDSFVPSKVAPAPAAVVPPTGPGMAPVPTGVFTDIPISNIRR VIAQRLMQSKQTIPHYL
SIDVNMGEVLLVRKELNKILEGRSKISVNDFIIKASALACLKVPANSSWMDTVIRQNHVVDVS
VAVSTPAGLITPIVFNAHIKGVETIANDVVSLATKAREGKLPHEFQGGTFTISNLGMFGIKNFS
AIIINPPQACILAIGASEDKLVPADNEKGFVDVSMMSVTLSCDHRVVDGAVGAQWLAEFRKYLEK
PITMLL**

Applications

Standard ELISA test, line/dot assay and microarray assay with positive/negative sera panels.





Formulation

Liquid in storage buffer (50mM Tris, 300-500mM NaCl, 10% Glycerol, Protease inhibitor, pH8.0).

Storage

Store at -80°C. Avoid repeated freezing/thawing cycles.

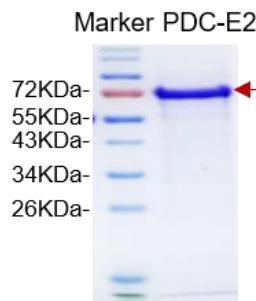
Quality Control Test

BCA to determine quantity of the protein.

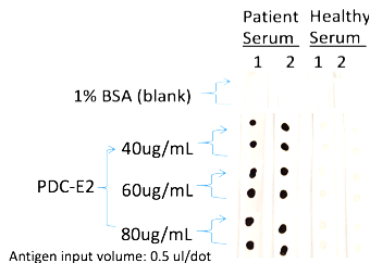
SDS PAGE to determine purity of the protein.

Immunoblot analysis to determine functionality of protein.

SDS-PAGE gel



Immunoblot assay



Contact Us

- Website: www.immunodiagnosics.com.hk
- E-mail: info@immunodiagnosics.com.hk
- Tel: (+852) 2831 5526; 2831 5508
- Fax: (+852) 2816 2095

