



Human Promyelocytic Leukemia Protein (PML)

Origin:	Recombinant	Cat. No.:	41A272
Tag:	N-terminal 6xHis	Size:	0.1 mg
Source:	<i>Spodoptera frugiperda</i> Sf9	Purity:	>80%
Other Names:	PML	Species:	Human

Description

Expressed in insect Sf9 cells with total 906 AA. Mw: 100.5 KDa (calculated). N-terminal 6xHis-tag and TEV cleavage site, 25 extra AA (highlighted).

Recombinant antigen for research use or manufacturing only.

Introduction to the Molecule

Key component of PML nuclear bodies that regulate a large number of cellular processes by facilitating post-translational modification of target proteins, promoting protein-protein contacts, or by sequestering proteins. It is reported that it associate with PBC (prevalence 13%) and AIH (prevalence 4%).

Immunological Function

As an autoantigen, PML binds with IgG-type human auto-antibodies.

Amino Acid Sequence

MSYYHHHHHDYDIPTTENLYFQGAEPAPARSPRPQQDPARPQEPTMPPPETPSEGRQPS
PSPSPTERAPASEEEFQFLRCQQCQAEAKCPKLLPCLHTLCSGCLEASGMQCPICQAPWPLGAD
TPALDNVFFESLQRRLSVYRQIVDAQAVCTRCKESADFWCFECEQLLCAKCFEAHQWFLKHEA
RPLAELRNQSVREFLDGTRKTNNIFCSNPNHRTPTLTSIYCRGCSKPLCCSCALLDSSHSELKCD
ISAEIQQRQEELDAMTQALQEQDSAFGAVHAQMHAAVGQLGRARAETEELIRERVRQVVAHVR
AQERELLEAVDARYQRDYEEMASRLGRLDAVLQRIRTGSALVQRMKCYASDQEVLDMHGFLRQ
ALCRLRQEEPQSLQAAVRTDGFDEFKVRQLDLSSCITQGKDAAVSKKASPEAASTPRDPIDVDL
PEEAERVKAQVQALGLAEAQMAVVQSVPGAHPVPVYAFSIKGPSYGEDVSNNTTTAQKRKCSQ
TQCPRKVIKMESEEGKEARLARSSPEQPRPSTSKAVSPPHLDGPPSPRSPVIGSEVFLPNSNHVA
SGAGEAERVVVISSSESDAENSSSRELDSSSESSDLQLEGPSTLRVLDENLADPQAEDRPL
VFFDLKIDNETQKISQLAAVNRESKFRVVIQPEAFFSIYSKAVSLEVGLQHFLSFLSSMRRPILAC
YKLWGPGLPNFFRALEDINRLWFEQEAISGFLAALPLIRERVPGASSFKLNLAQTYLARNMSER
SAMA AVLAMRDL CRLLEVSPGPQLAQHVYPFSSLQCFASLQPLVQAAVLPRAEARLLALHNVSF
MELLSAHRDRQGGLKKYSRYLSLQTTTLPPAQPAFNLQALGTYFEGLLG PALARAEGVSTPLA
GRGLAERASQQS

Applications

Standard ELISA test, line/dot assay and microarray assay with positive/negative sera panels.





Formulation

Liquid in storage buffer (50mM Tris, 300mM NaCl, 10%Glycerol, pH 7.4).

Storage

Store at -20°C. Avoid repeated freezing/thawing cycles.

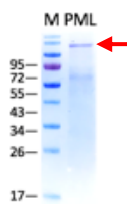
Quality Control Test

BCA to determine quantity of the protein.

SDS PAGE to determine purity of the protein.

Immunodot analysis to determine functionality of protein.

SDS-PAGE Gel



Contact Us

- Website: www.immunodiagnostics.com.hk
- E-mail: info@immunodiagnostics.com.hk
- Tel: (+852) 2831 5526; 2831 5508
- Fax: (+852) 2816 2095

