



Human 2-oxoglutarate dehydrogenase complex E2 (OGDC-E2)

Origin:	Recombinant	Cat. No.:	41A072
Tag:	N-terminal 6xHis	Size:	0.1 mg
Source:	<i>Spodopterafrugiperda</i> Sf9	Purity:	>90%
Other names:	OGDC-E2, DLST	Species:	Human

Description

Expressed in insect Sf9 cells with total 411 AA. Mw:44.5 KDa(calculated). N-terminal 6xHis-tag and TEV cleavage site, extra 25 AA (highlighted).

Recombinant antigen for research use or manufacturing only.

Introduction to the Molecule

OGDC-E2 is the central E2 component of 2-oxoglutarate dehydrogenase complex (OGDC), which is a mitochondrial multienzyme complex involved in the maintenance of the cellular redox state.

Patients with primary biliary cirrhosis show autoantibodies against the E2 component of 2-oxoglutarate dehydrogenase complex.

Immunological Function

As an autoantigen, OGDC-E2 binds with IgG-type human auto-antibodies.

Amino Acid Sequence

MSYYHHHHHDYDIPTTENLYFQGADDLVTVKTPAFAESVTEGDVRWEKAVGDTVAEDE
VVCEIETDKTSVQVPSANGVIEALLVPDGGKVEGGTPLFTLRKTGAAPAKAKPAEAPAAAAPKA
EPTAAAVPPPAAPIPTQMPPVPSQPPSGKPVSAVKPTVAPPLAEPGAGKGLRSEHREKMNRM
RQRIAQRLKEAQNTCAMLTTFNEIDMSNIQEMRARHKEAFLKKHNLKLGFM SAFVKASAFALQE
QPVVNAVIDDTTKEVVYRDYIDISVAVATPRGLVVPVIRNVEAMNFADIERTITELGEKARKNEL
AIEDMDGGTFTISNGGVFGSLFGTPIINPPQSAILGMHGIFDRPVAIGGKVEVRPMMYVALTYDH
RLIDGREAVTFLRKIKAAVEDPRVLLLDL

Applications

Standard ELISA test, line/dot assay and microarray assay with positive/negative sera panels.

Formulation

Liquid in storage buffer (50mM Tris, 300-500mM NaCl, 10% Glycerol, Protease inhibitor, pH8.0).





Storage

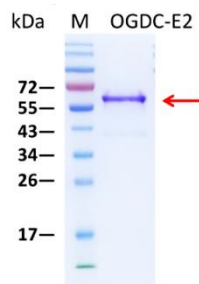
Store at -80°C . Avoid repeated freezing/thawing cycles.

Quality Control Test

BCA to determine quantity of the protein.

SDS PAGE to determine purity of the protein.

SDS-PAGE gel



Contact Us

- Website: www.immunodiagnostics.com.hk
- E-mail: info@immunodiagnostics.com.hk
- Tel: (+852) 2831 5526; 2831 5508
- Fax: (+852) 2816 2095

