



Human Cytochrome P450 2D6 (LKM-1)

Origin:	Recombinant	Cat. No.:	41A262
Tag:	N-terminal 6xHis	Size:	0.1 mg
Source:	<i>Spodoptera frugiperda</i> Sf9	Purity:	>80%
Other Names:	CYP2D6	Species:	Human

Description

Expressed in insect Sf9 cells with total 521 AA. Mw: 58.7 KDa (calculated).
N-terminal 6xHis-tag and TEV cleavage site, 25 extra AA (highlighted).

Recombinant antigen for research use or manufacturing only.

Introduction to the Molecule

Cytochrome p450 2D6 is a cytochrome p450 mono-oxygenase that is primarily expressed in the liver and identical with the so-called liver-kidney microsome 1 (LKM 1) antigen. This enzyme localizes to the endoplasmic reticulum and is involved in the detoxification of xenobiotic substances and responsible for the metabolism of many drugs and environmental chemicals that it oxidizes. As the conventional serological repertoire for the diagnosis of AIH, CYP2D6 has a prevalence of around 70% in AIH Type 2.

Immunological Function

As an autoantigen, CYP2D6 binds with IgG-type human auto-antibodies.

Amino Acid Sequence

MSYYHHHHHDYDIPTTENLYFQGAGLEALVPLAVIVAIFLLLVDLMHRRQRWAARYPPGP
LPLPGLGNLLHVDFQNTPYCFDQLRRRFGDVFSLQLAWTPVVVLNGLAAVREALVTHGEDTADR
PPVPITQILGFGPRSQGVFLARYGPAWREQRRFSVSTLRNLGLGKKSLEQWVTEEAACLCAFA
NHSGRPFRPNGLLDKAVSNVIASLTCGRRFEYDDPRFLRLDLAQEGLKEESGFLREVLNAVPL
LHIPALAGKVLRFQKAFLTQLDELLTEHRMTWDPAPPRDLTEAFLAEMEKAKGNPESSFNDEN
LRIVVADLFSAGMVTSTTLAWGLLLMILHPDVQRRVQQEIDDVIGQVRRPEMGDQAHMPYTT
AVIHEVQRFQDIVPLGVTHMSTRDIEVQGFRIKGTTLITNLSSVLKDEAVWEKPFRLFHPEHFLD
AQGHFVKPEAFLPFSAGRRACLGEPLARMELFFTSLLQHFSFSVPTGQPRPSHHGVFAFLVSP
SPYELCAVPR

Applications

Standard ELISA test, line/dot assay and microarray assay with positive/negative sera panels.

Formulation

Liquid in storage buffer (8M Urea, 10mM Tris, 50mM Na₂HPO₄, 1% SDS, pH8.0).





Storage

Store at -20°C. Avoid repeated freezing/thawing cycles.

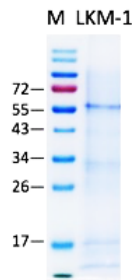
Quality Control Test

BCA to determine quantity of the protein.

SDS PAGE to determine purity of the protein.

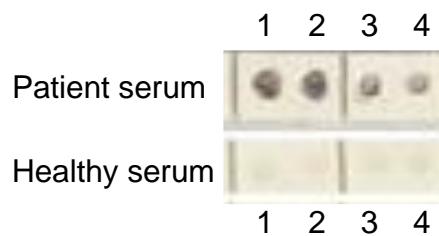
Immunodot analysis to determine functionality of protein.

SDS-PAGE Gel



Dot blot assay

Dot blot analysis of CYP2D6



Analysis of serum from healthy subjects and patients. Recombinant autoantigens were utilized in this dot-blot assay for validation

Contact Us

- Website: www.immunodiagnostics.com.hk
- E-mail: info@immunodiagnostics.com.hk
- Tel: (+852) 2831 5526; 2831 5508
- Fax: (+852) 2816 2095

